



SURVIVAL GUIDE 25/26





Getting Started

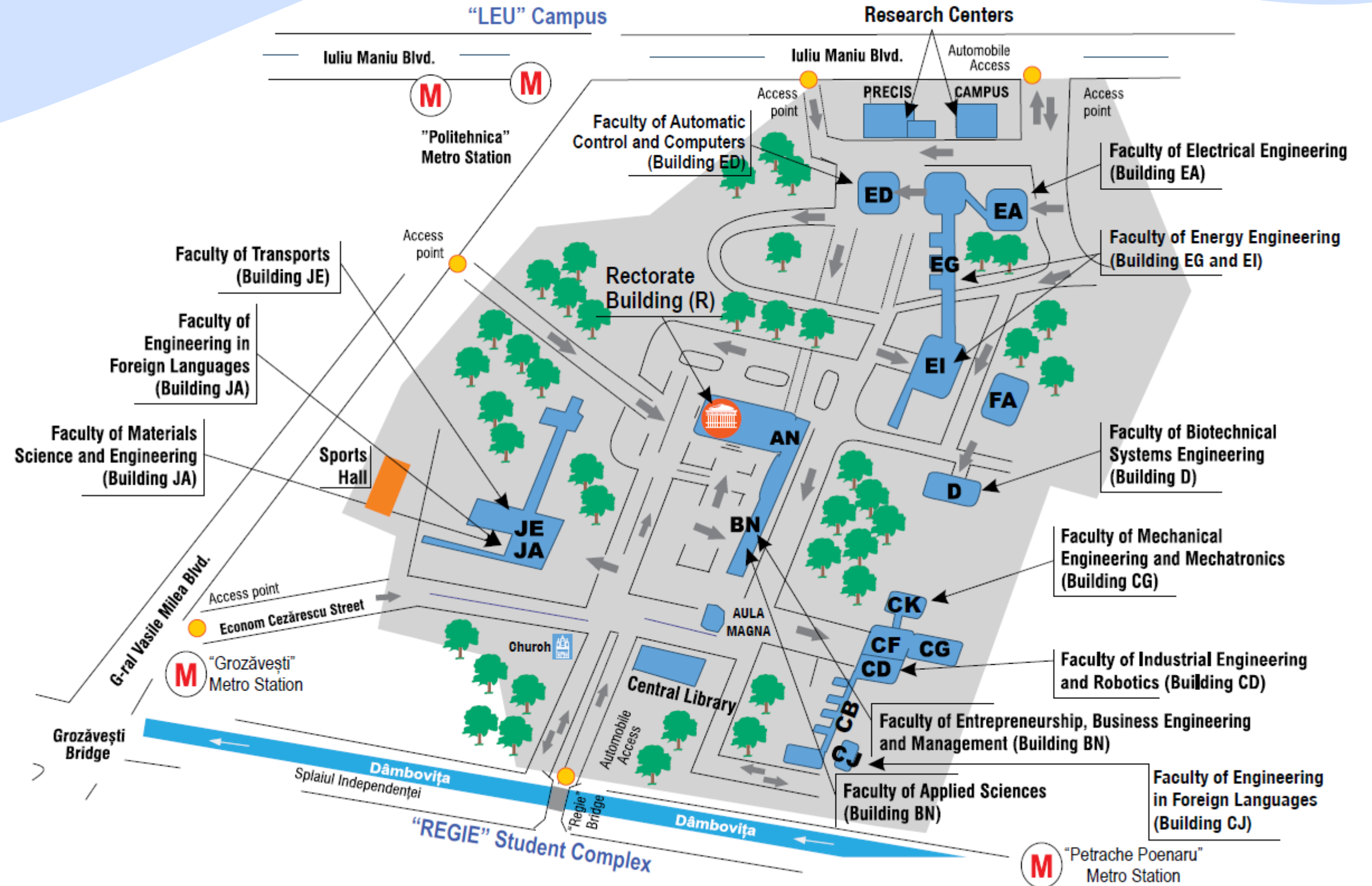
Location & Campus Map
University Facilities
Administrative Issues

ERASMUS+ Faculties Responsibles
Academic year 25/26
Useful Links

POLITEHNICA Bucharest



Main Campus Map



How to arrive at Main Campus POLITEHNICA Bucharest (I)



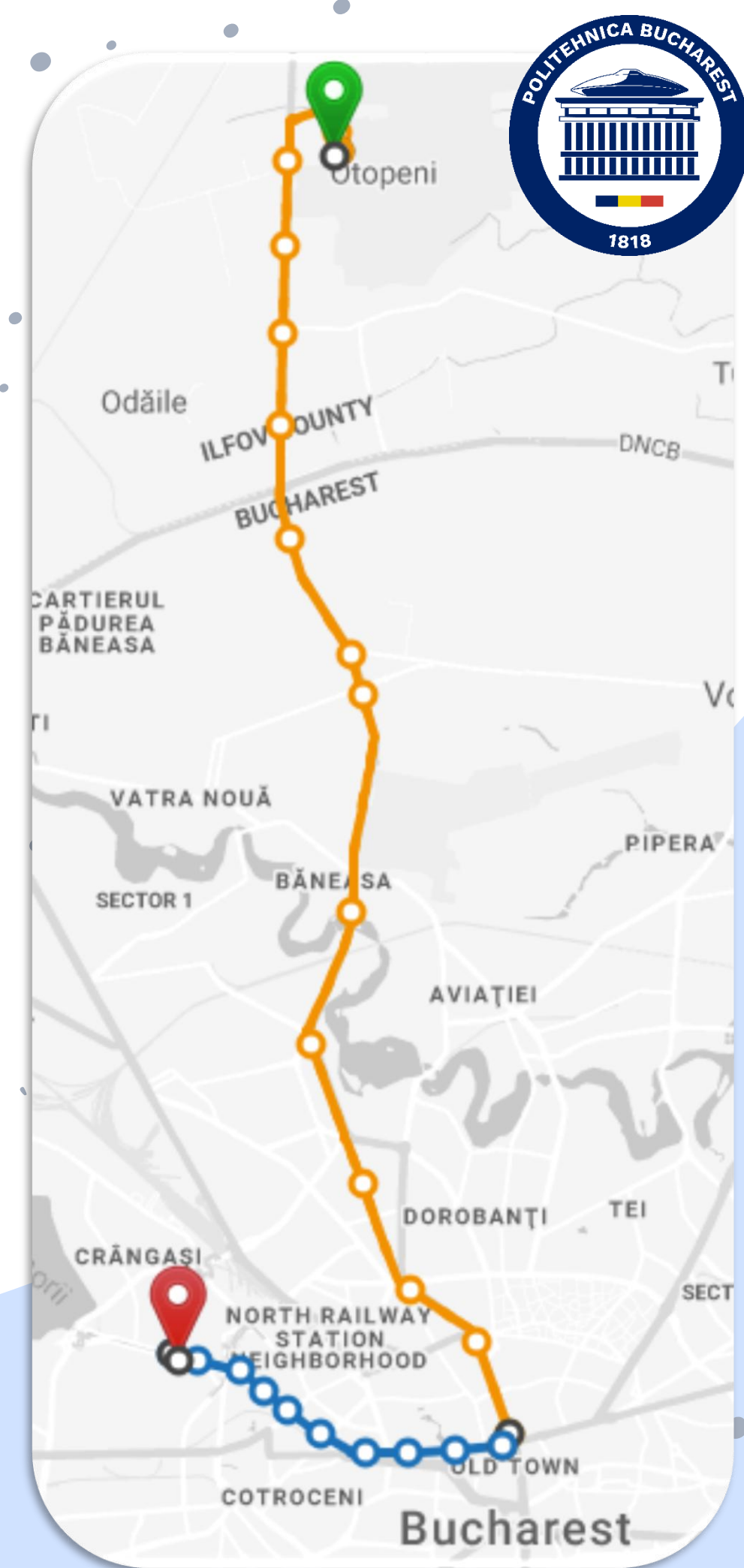
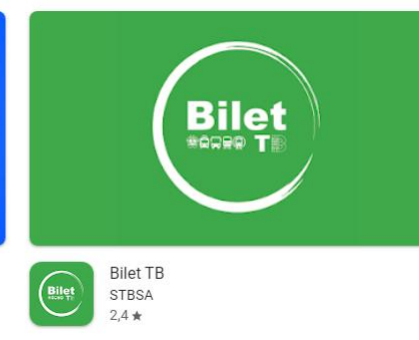
1) Bus

Express bus route: Bus 100, Otopeni (Henri Coandă) Airport Arrivals - Unirii Square (Piata Unirii 2)

*A transportation ticket for urban lines is 3 lei for 90 min.

*Change the 100 bus at Universitate station, take 201 bus and get down at Complex Regie station (P12/P19 Dorms)

Payment: [by SMS](#), [by phone application](#)



How to arrive at Main Campus POLITEHNICA Bucharest (2)



2) Bus & Metro

*Change at Unirii 1 and take the yellow line metro towards Dristor 2 and get down at Grozavesti or Petrache Poenaru.

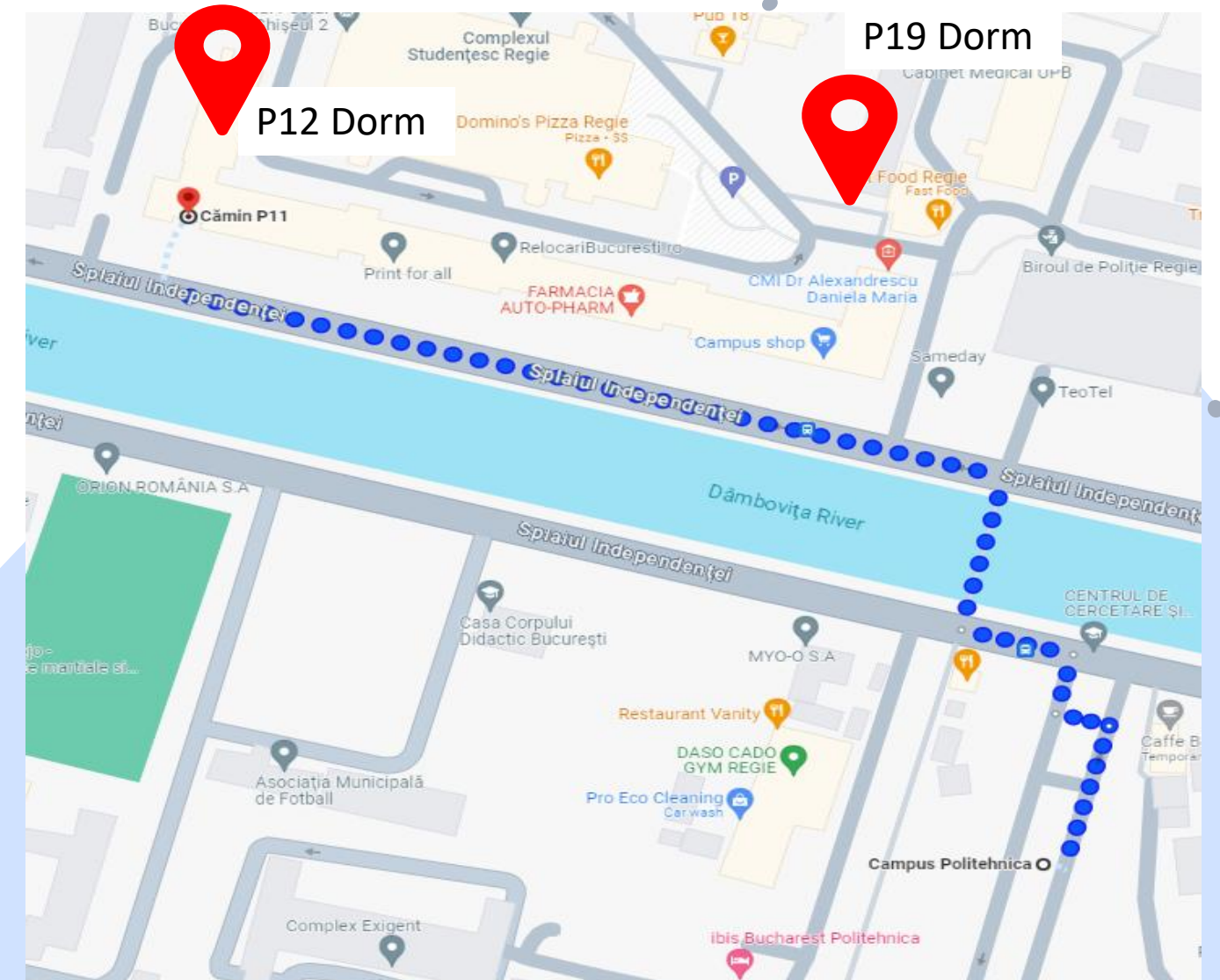
*You can walk by foot from Grozavesti or Petrache Poenaru towards Regie Campus (P12/P19 Dorms).

*2 trip ticket for metro is 10 lei (aprox. 2 euro)

Plan your route here:

<https://www.stb.ro/linii> for buses and trams.

<https://www.metrorex.ro/> for metro (subway)



How to arrive at Main Campus POLITEHNICA Bucharest (3)



3) Train & Bus

Henri Coandă Airport – Gara de Nord (<https://www.cfrcalatori.ro/>)

- The journey takes about 30 minutes
- The price of a ticket from 10 lei (aprox. 2 euros)

Tickets can also be purchased online by accessing the online ticket sales website, <https://bilete.cfrcalatori.ro/en-GB/Itineraries>, up to 10 minutes before the train leaves.

Then, you can take 105 bus or 162 bus one station and then walk to the P12/P19 dorms. Check [InfoTB!](#)



Itineraries + buy

From

Aeroport Henri Coandă

To

Bucuresti Nord

Departure date

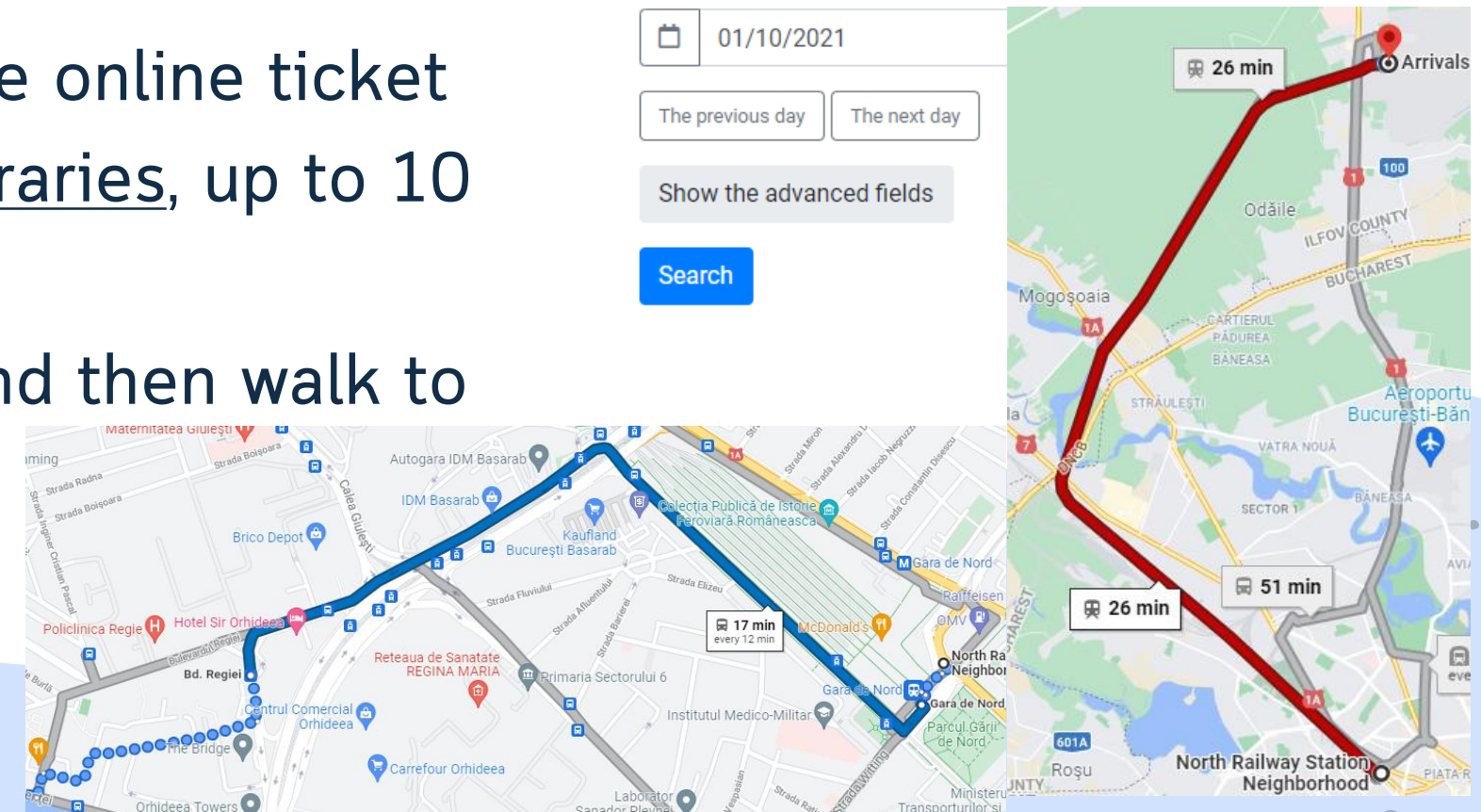
01/10/2021

The previous day

The next day

Show the advanced fields

Search



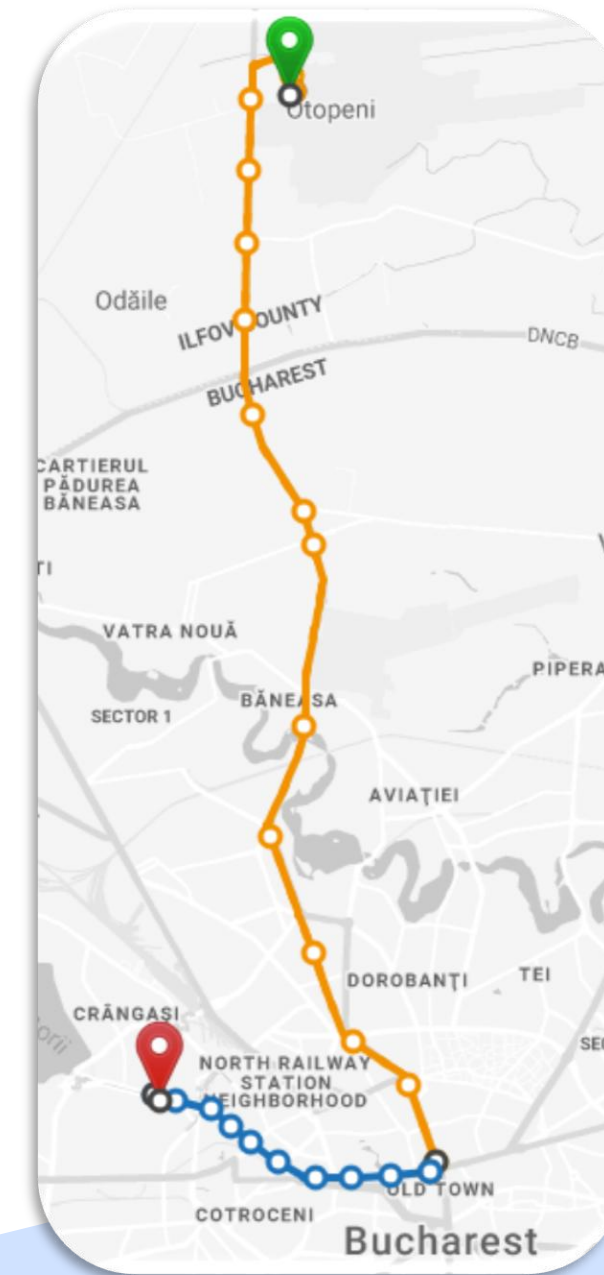
How to arrive at Main Campus POLITEHNICA Bucharest (4)



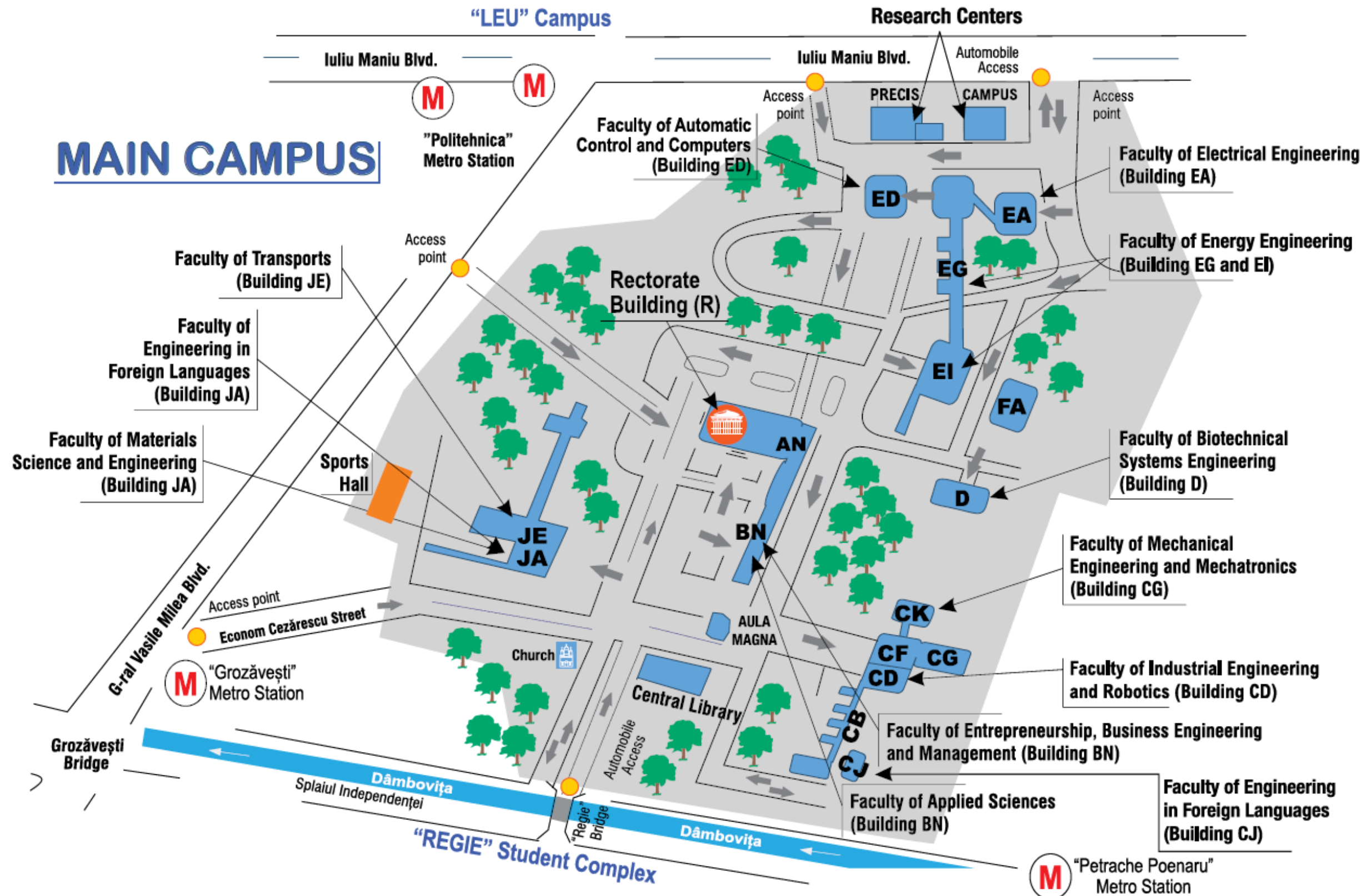
3) Car-sharing apps and Taxi

Uber, Bolt, FREE NOW, Star Taxi, and others...

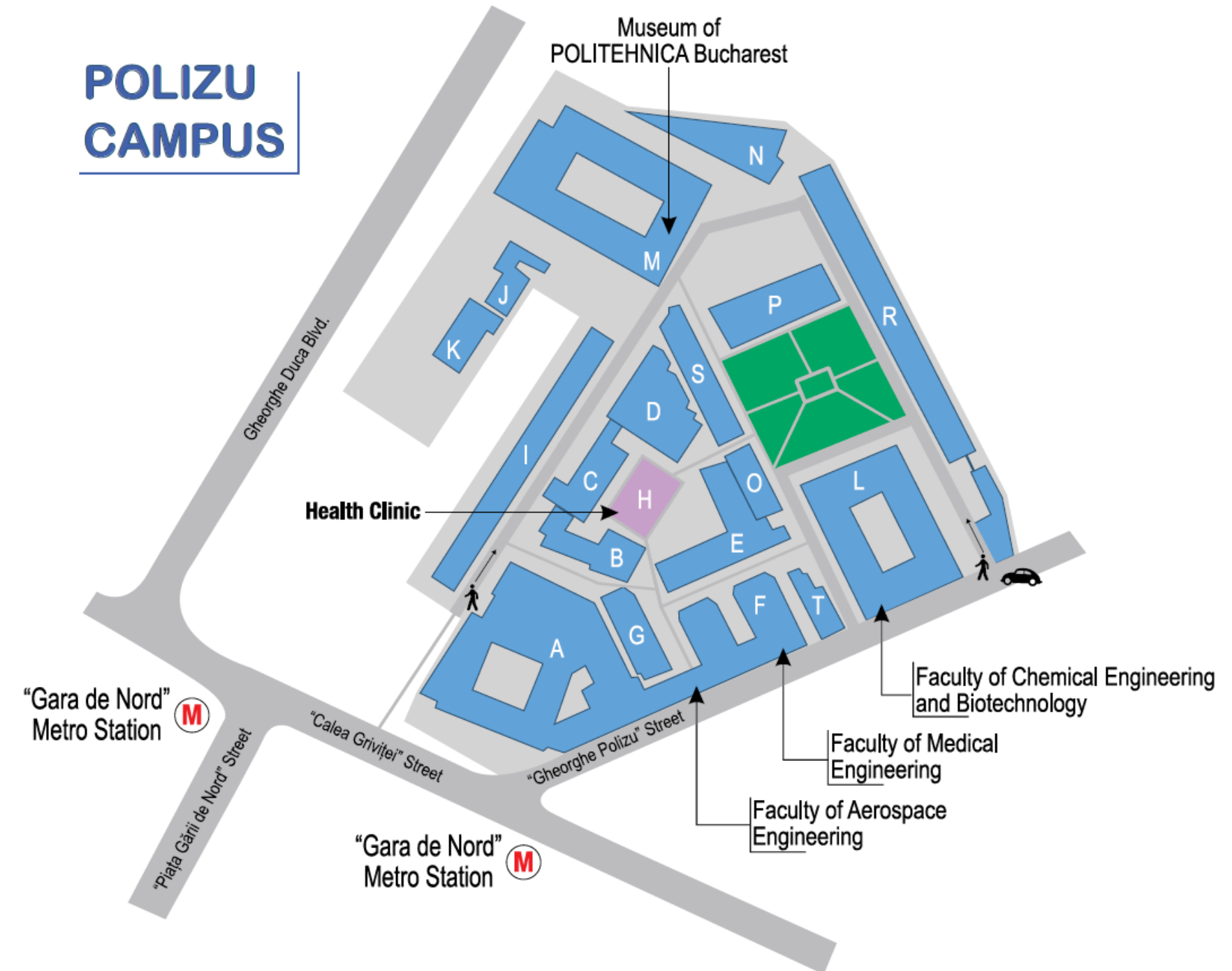
- You can use the Wi-Fi from the airport and ask for a ride through the mobile apps mentioned above.
- You can call a taxi from the airport in the designated area to do it.
- We are suggesting you to not take a taxi without calling or using an app.
- The average price from Airport to Regie Campus is 70-100 lei when it is not rush hour. And then walk to the P12/P19 dorms. Check Google Maps!

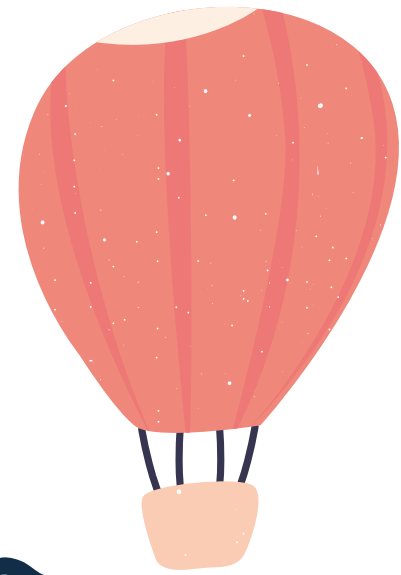


POLITEHNICA Bucharest Campuses (I)

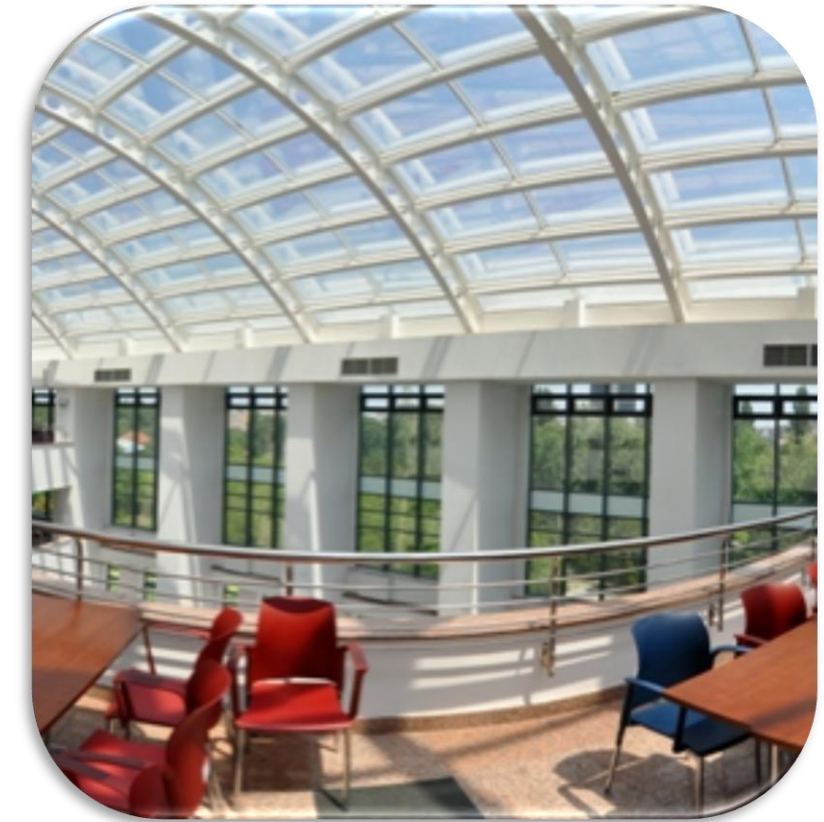


POLITEHNICA Bucharest Campuses (2)





POLITEHNICA Bucharest Library



29/09/2025 – 19/06/2026

First semester: 29/09/2025 - 13/02/2026
EXAM SESSION 1ST semester (3 weeks)
24/01/2026 – 13/02/2026

Second semester: 23/02/2026 – 19/06/2026
EXAM SESSION 2nd semester (3 weeks)
30/05/2026 - 19/06/2026

Academic Calendar

25/26

Christmas holiday: 20/12/2025 - 11/01/2026

Holiday between semesters: 14/02/2026 - 22/02/2026

Free days during the week: 1st of December (National Day), 10th of April (Good Friday), 13nd of April (2nd day of Easter). 1st of May (Labor Day), 1st of June (2nd day of Pentacost)

You can find the Academic Calendar here: <https://upb.ro/en/erasmus/students/>





ERASMUS+

Administrative Issues

Arrival Certificate - the form will be issued and signed at your physical arrival after the Erasmus Orientation Meeting or in the following days, at the ERASMUS+ Office (Rectorate Building).

Learning Agreement (during the mobility - signed first by the local ERASMUS Faculty Responsible). The changes will be done within first **3 weeks** of each semester on the exchange student's profile on erasmus.upb.ro platform.

Address ERASMUS+ Office:
313, Splaiul Independentei, Sector 6,
RO-060042, BUCHAREST
Room R-401 (Rectorate Building, 4th floor)
<https://upb.ro/en/erasmus/study-mobility/>



Learning Agreement Changes

1. Any course has 2 or 3 mandatory parts: course/lecture, seminar and/or laboratory - you need to attend all of them if mandatory, to be able to enter the exam (follow the requirements of professors both for course and seminar examinations).
2. If you are not be able to contact the professors or find the classes, PLEASE INFORM THE FACULTY COORDINATOR as soon as possible.
3. Please follow the faculty's guidelines regarding the activity.

The deadline for the digital LA changes with ALL signatures must be made within the first 3 weeks of the semester on your profile ERASMUS.UPB.RO
The Transcript of Records will be issued based on this LA!



Get to know your local faculty!

Academic

- Contact the ERASMUS+ Faculty Responsible!
- Get the schedule from the faculty website or ask the ERASMUS+ Faculty Responsible for more info.
- Discuss your Learning Agreement and ECTS!

Administrative Faculty's Secretariat Office

- Get your Student Card! (after the first 3 weeks of the semester)
- Get your transport card for the transportation discounts (locally for underground metro and nationally for train)!

You must do all these after the semester starts!



Accommodation for ERASMUS+ exchange students

The accommodation provided to the Erasmus exchange students it is in the [P12 Dorm](#) or [P19 Dorm](#) (Hostel) Regie Student Complex.

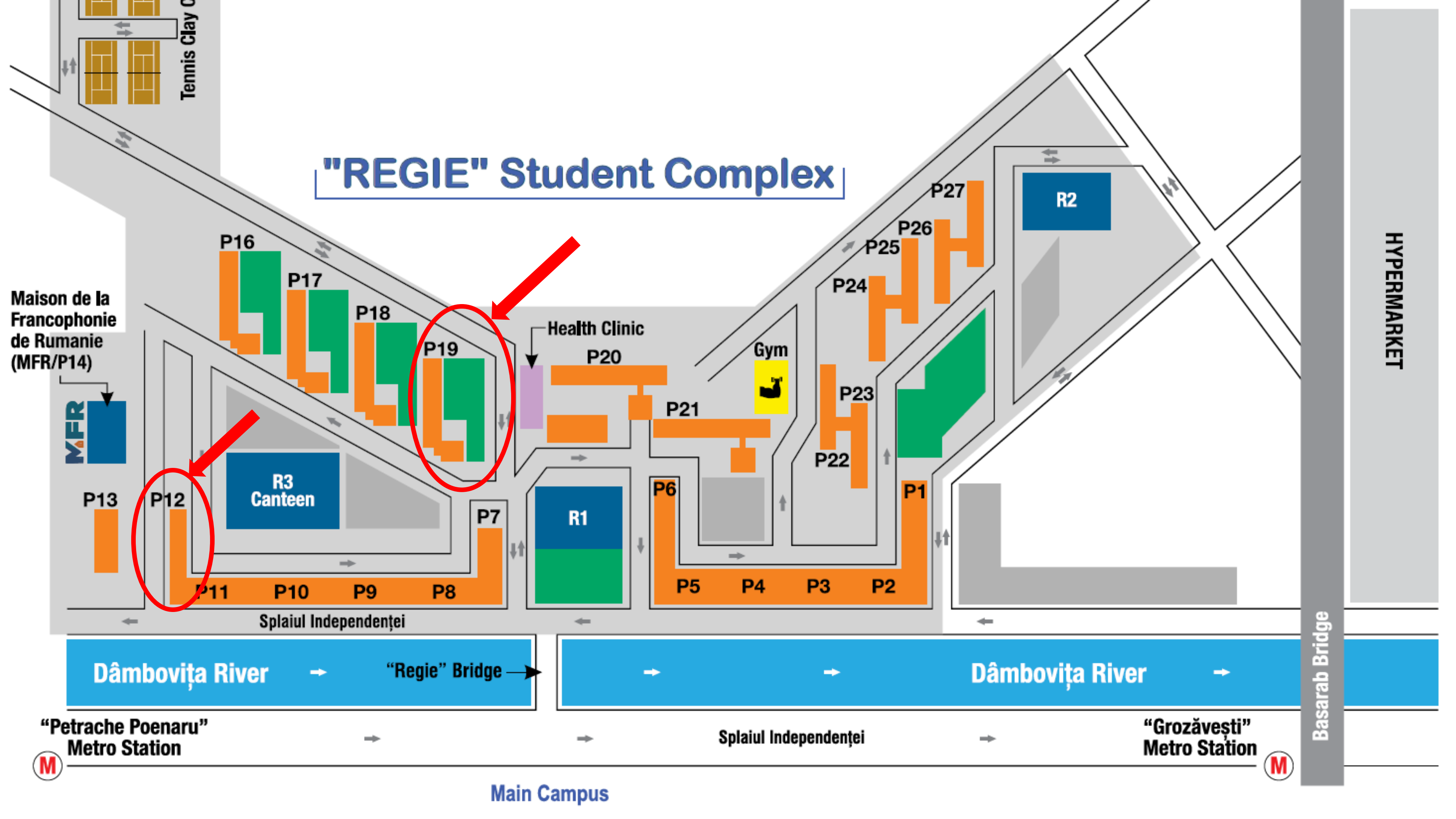
The division will be made randomly by the dormitory admin (same gender and nationality per room), at the beginning of the semester. For any inquiries regarding this issue please contact the Dorm Admins.



Erasmus+



"REGIE" Student Complex



Maison de la Francophonie de Roumanie (MFR/P14)

Tennis Clay C

P16

P17

P18

P19

P12

R3 Canteen

Health Clinic

P20

Gym

P21

P22

P24

P25

P26

P27

R2

P13

P11

P10

P9

P8

P7

R1

P6

P5

P4

P3

P2

P1

Splaiul Independenței

Dâmbovița River

"Regie" Bridge

Dâmbovița River

"Petrașche Poenaru" Metro Station

Splaiul Independenței

"Grozăvești" Metro Station

Basarab Bridge

HYPERMARKET

Main Campus

Dorm Facilities

P12
Dorm



Entrance hallway

Two twin/bunk beds

One Desk,
two chairs

Bathroom with
shower, toilet and sink

A wardrobe

One fridge

Air conditioning

Two sets of bed covers



Erasmus+



Dorm Facilities

P19
Dorm



Entrance hallway

Two twin/bunk beds

One Desk,
two chairs

A wardrobe

One fridge

Air conditioning

Two sets of bed covers



Erasmus+



Bring with you!

for
Dorms
check-in

ID and/or Passport

Copy of ID/Passport

Proof of payment

Recommended:

Towels

A set of bed covers

Ethernet cable for internet
connection



Erasmus+



Recommendations

Laundry Places

Washescu - <https://washescu.ro/laundromat/>

TotalWash - <https://www.totalwash.ro/>

Canteens

Cantina R3 (Regie Campus)

Cantina Facultatea de Transporturi (in Transports Faculty)

Cantina Rectorat (in the Rectorate building)

Cantina Leu (in Leu Campus)

Cantina IIR (in Industrial Engineering and Robotics Faculty)

[Student Life POLITEHNICA Bucharest](#)



Important Non-EU Students

Students from Non-EU countries after arrival need to apply for a RESIDENCE PERMIT:

- Letter of Acceptance from the ERASMUS+ Office;
- Residence paper (rent/tenancy contract) - photocopy and original;
- Medical certificate;
- Photocopies of the passport (the picture page, the visa page and the page with the stamp showing the most recent date when the person entered Romania);
- [Application form](#) (mandatory for Immigration Office);
- Proof of health insurance
- Fees

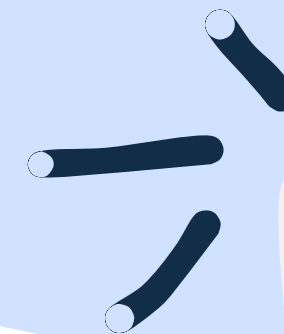
For updated information please check frequently the following website:

<https://igi.mai.gov.ro/en/how-can-i-obtain-a-long-stay-visa-for-studies/>

All documents must be uploaded on the platform:

<https://portaligi.mai.gov.ro/portaligi/>

ESN Poli BeBuddy System



SIDE NOTE 2: Since there are numerous incoming students at POLITEHNICA Bucharest and the number of volunteers dedicated to the BeBuddy program is limited, there is a possibility in extraordinary cases to have all the volunteers taken and you will join a waiting list.

Communication Mediums:

WhatsApp: <https://chat.whatsapp.com/LJloelxGyWnEjmmEMwxRX5>

Facebook: www.facebook.com/esnpoli

Instagram: www.instagram.com/esnpoli

To receive your buddy

You'll need to download and install on your phone Papaya (ESN). Papaya is an application that takes care of the matching between volunteers (locals) and Erasmus students. Starting from this email, foreign students will be able to download Papaya and join the ESN Poli BeBuddy project. There isn't a deadline for enrolling, nonetheless, keep in mind that the sooner you join, the better since local students are already waiting.

To join the system, you must follow the steps below:

1. Download Papaya ESN (Android: <http://bit.ly/papayaESNandroid>, iOS: <http://bit.ly/papayaESNiOS>;
2. Create an account, ideally with either Google or Facebook and select your country of origin;
3. Further, you'll be asked to select the closest ESN section to you. Type, search, and select "ESN Poli". Confirm your choices;
4. Complete the information for your account and be sure to fill in all the fields, including the phone number;
5. Confirm all your choices;
6. Now you are redirected to ESN Poli Papaya's Main Page;
7. *In some cases you will have to wait for the admin's approval to join the page;
8. After being accepted, you'll notice a project to which you can subscribe. That is BeBuddy ESN Poli;
9. Subscribe (tap) to the project, select "I need help (Erasmus)", scroll and fill in all the required fields, and save your subscription;
10. For the moment, you're done!

After completing all the steps above, you'll be able to receive local buddies. The matching will start in a week or so, and you must be enrolled in the project to participate and to get your buddies.

SIDE NOTE 3: If you're not using a smartphone, send an email at buddy@poli-bucharest.esn.ro.

Good to know!

Attend the E+ Orientation **MEETING!** You will get **ESSENTIAL** information for stuff that otherwise you will not be able to do it alone!

You will find the course schedule on each faculty website few days before the academic year starts. The schedule is not made automatically!

Apply for the buddy programme from ESN Poli, it is highly recommended to get in contact with **POLITEHNICA** students before starting your mobility!



WHERE TO FIND THE SCHEDULE



Faculty Name	Link
Automatic Control and Computer Science (ACS)	https://acs.pub.ro/educatie/orare/
Electronics, Telecommunications and IT (ETTI)	https://etti.upb.ro/studenti/orar/
Industrial Engineering and Robotics (FIIR)	https://fiir.upb.ro/index.php/en/licenta/orar and https://fiir.upb.ro/index.php/en/masterat/orar
Mechanical Engineering and Mechatronics (FIMM)	http://www.mecanica.pub.ro/new/index.php/orar/
Engineering in Foreign Languages (FILS)	Timetable - FILS UPB
Transports (Transporturi)	https://transport.upb.ro/orar-licenta/ https://transport.upb.ro/orar-masterat/
Aerospace Engineering (FIA)	http://www.aero.pub.ro/en/groups-timetable/
Chemical Engineering and Biotechnologies (ICBi)	https://chimie.upb.ro/avizier/orare/
Medical Engineering (FIM)	https://fim.upb.ro/studenti/orar/
Entrepreneurship, Business Engineering & Management (FAIMA)	https://faima.upb.ro/ -> Studenti -> Orar
UNESCO Department	https://www.unesco.chair.upb.ro/orar/

THE FACULTY ERASMUS+ RESPONSIBLES



Faculty	Responsible E+	E-mail
Electrical Engineering (FIE)	Prof. Lucian PETRESCU	lucian.petrescu@upb.ro
Automatic Control and Computer Science (ACS)	Prof. Cristian FLUTUR	cristian.flutur@upb.ro
Electronics, Telecommunications and IT (ETTI)	Prof. Razvan CRACIUNESCU	razvan.craciunescu@upb.ro
Energy Engineering (Energetică)	Prof. Andreea IANTOC	andreea.iantoc@upb.ro
Industrial Engineering and Robotics (FIIR)	Prof. Dragos APOSTOL	dragos.apostol@upb.ro
Mechanical Engineering and Mechatronics (FIMM)	Prof. Marilena STOICA	marilena.stoica@upb.ro
Engineering in Foreign Languages (FILS)	Prof. Adriana LUNGU	adriana.lungu@upb.ro
Transports (Transporturi)	Prof. Florin NEMTANU	florin.nemtanu@upb.ro
Aerospace Engineering (FIA)	Prof. Laurentiu MORARU	laurentiu.moraru@upb.ro
Chemical Engineering and Biotechnologies (ICBi)	Prof. Iuliana BIRU	iuliana.biru@upb.ro
Medical Engineering (FIM)	Prof. Izabela-Cristina STANCU	izabela.stancu@upb.ro
Entrepreneurship, Business Engineering & Management (FAIMA)	Prof. Olga BUCOVETCHI	olga.bucovetchi@upb.ro



The end

National University of Science and Technology POLITEHNICA Bucharest

ERASMUS+ Office

Violeta NEGREA (erasmus@upb.ro)

Bianca DANILOV (erasmus@upb.ro)

Andreea M.G. MILITARU (student.erasmus@upb.ro)



Address

313, Splaiul Independentei, Sector 6,
RO-060042, BUCHAREST
Room R-401 (Rectorate Building, 4th
floor)

<https://upb.ro/en/erasmus/students/>



Erasmus+

Thank you for
your attention

